

General Characteristics

Built in mounting type ballasts
Filled in polyester resin
Electric protection class I

Caratteristiche Costruttive

Alimentatori da incorporare
Impregnazione in resina poliestere
Classe di protezione I

Technical Features

Input voltage 230Vac
Input frequency 50Hz
Thermal Class H
Energy efficiency ratio (EEI): A2

Caratteristiche Tecniche

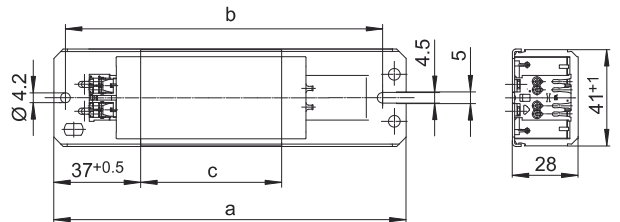
Tensione di ingresso 230Vac
Frequenza di ingresso 50Hz
tw 130/Δt60-65-70
Indice efficienza energetica (EEI): A2

Reference Standards

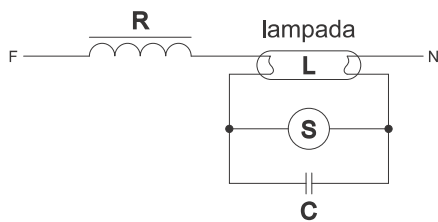
EN 55015
EN 60921
EN 61000-3-2
EN 61000-3-3
EN 61347-1
EN 61347-2-8
EN 61547

Norme di Riferimento

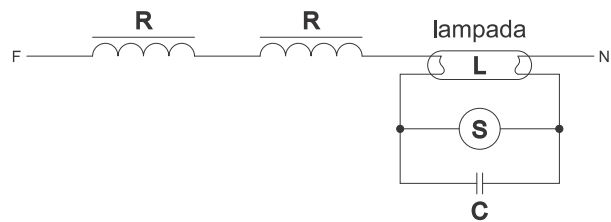
EN 55015
EN 60921
EN 61000-3-2
EN 61000-3-3
EN 61347-1
EN 61347-2-8
EN 61547



Schema elettrico FL040A2



Schema elettrico FL065A2



* N.B. Servono due reattori collegati in serie per alimentare una lampada da 58/65W
Two series reactors are needed to power a 58/65W lamp

CODICE CODE	LAMPADA LAMPS	CORRENTE CURRENT	LAMPADA LAMP	DIAMETRO LAMPADA LAMP DIAMETER	CAPACITÀ CAPACITY	DIMENSIONI SIZE	DIMENSIONI SIZE (mm)				PESO WEIGHT (g)
							A	B	C	D	
new FL040A2	1XFD-36-E	0,430	T8 G13	26	4,5	EEI = A2	233	42	28	220	1350
	2XFD-18-E	0,400	T8 G13	26	4,5						
	1XFD-40-E	0,430	T12 G13	38	4,5						
	2XFD-20-E	0,400	T12 G13	38	4,5						
new FL065A2	* 1XFD-58-E	0,670	T8 G13	26	7	EEI = A2	233	42	28	220	1350
	1XFD-65-E	0,670	T12 G13	38	7						

